



WE CREATE  
YOUR DREAM IN  
LIQUID STATE

---

PRIVATE LABEL PERFUMES



Rosefruit

100ml / 3.4 fl.oz.

Aldehyde

100ml / 3.4 fl.oz.

Fruit

100ml / 3.4 fl.oz.

Fruit

100ml / 3.4 fl.oz.





# ABOUT US

---

Founded in 2006 in Portugal, NORTEMPRESA PERFUME LAB is the first perfume factory in Portugal.

NORTEMPRESA guiding principles of design excellence, global sourcing, market expertise, category management, and long term vision.

With an experienced team and an elaborate excellence products such as: perfumes and perfumed products "private label" for brands, celebrities and events.

We design and manufacture exclusive brands and private label for retailers.

We are a perfume contract manufacturer company.

---





# WHAT WE DO

---

From high street fashion to home and décor, NORTEMPRESA PERFUME LAB provides leading specialty retailers with full turnkey category management.

---

## **Hydroalcoholic cosmetics**

Perfumes  
(Eau de cologne, eau de toilette and eau de parfum)  
Aftershave  
Fragrance mist

## **Home fragrance**

Perfumed candles  
Scented ceramics  
Air fresheners  
Reed diffusers  
Textile sprays

FULL SERVICE

# PERFUME CONTRACT MANUFACTURER COMPANY

BOTTLE AND PACKAGING DESIGN

PRODUCT VIABILITY STUDY, PRICES, AUDIENCE, STRATEGY

FRAGRANCE CREATION

PRODUCT FORMULATION

COSMETICS REGULATORY COMPLIANCE

PRODUCTION

FILLING

PACKAGE

LOGISTIC

## WHO WE WORK



CLAUS PORTO



SEASIDE



Ruck in Rio

AIRQUALITY<sup>®</sup>  
MARKETING OLFATIVO



---

We develop products according to our customers.

With an experienced team and a lab prepared to elaborate excellence products such as: perfumes, cosmetics and private label perfumed products for brands, celebrities and events.

We present complete products, according to the latest market trends and always focused on a strict quality control.

---









EAU DE PARFUM  
100ML 3.4 FL. OZ

*Handcrafted by*

NORTEMPRESA PERFUME LAB  
Rua Parque Bouça das Mouras, 56  
Braga – Portugal

INGREDIENTS: Alcohol Denat., Aqua, Parfum, Limonene, Benzylphenyl Methylpropional,  
Linalool, Hydroxycitronellol, Alpha-Isomethyl Ionone, Hexyl Citronnol, Geraniol,  
Benzyl Salicylate, Benzyl Benzoate, Citronellol, Citral, Anise Alcohol, Eugenol.



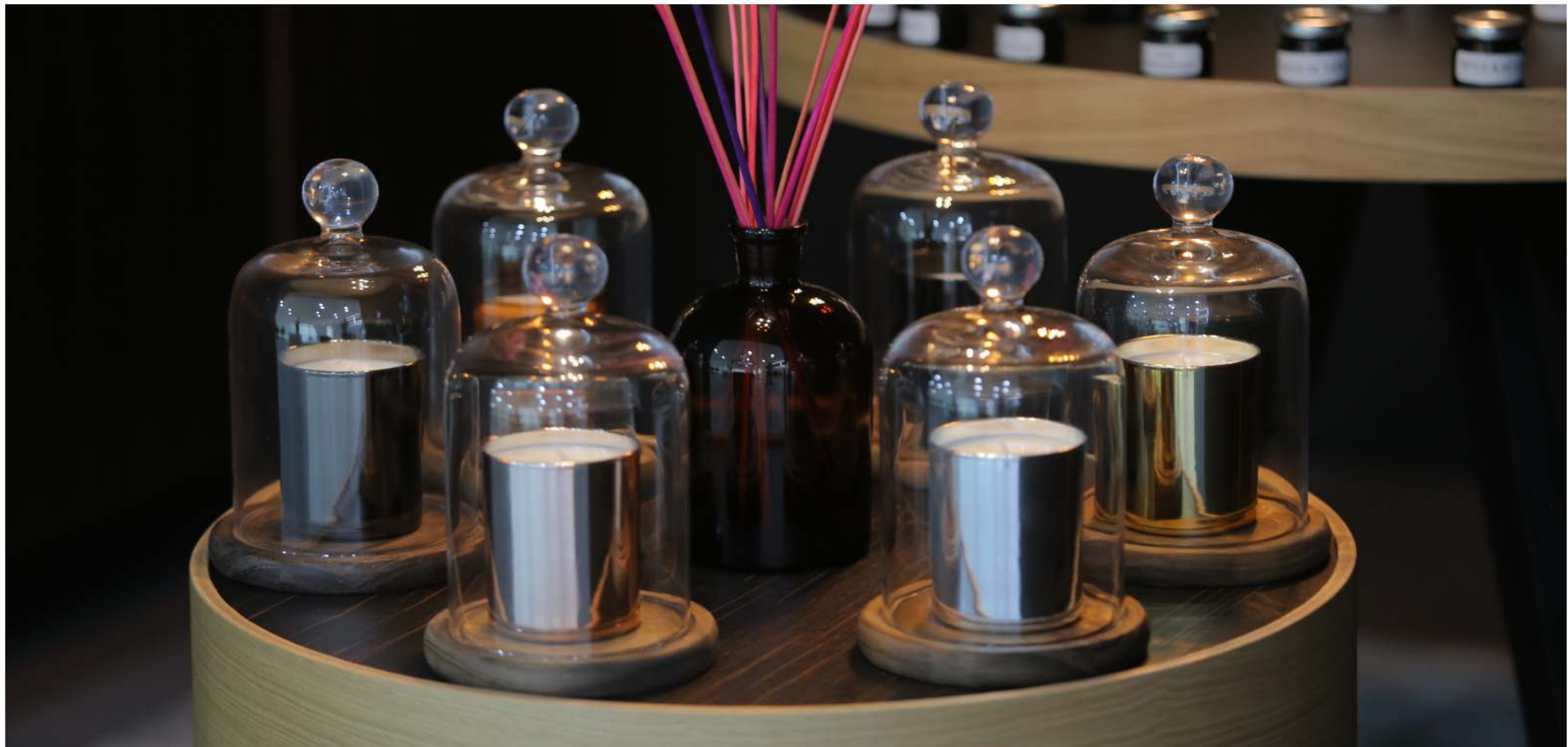
OBSEQUIO  
DEL

















# CREATE DESIGN PRODUCE

---

LABORATORY

QUALITY CONTROL

WHITE ROOMS

MACERATION ROOMS

AUTOMATIC FILLING LINES

SEMI-AUTOMATIC FILLING LINES

PACKAGING LINES

LOGISTIC

---

## OUR PROCESS

---

Our production process is equipped with the most advanced technology.  
We are focused on producing high quality cosmetic products.

3.000 SQUARE METTERS

30.000 PERFUME BOTTLES/DAY

350.000L PERFUME/YEAR

We are a full service perfume contract manufacturer company



ISO 22716 Cosmetics Good Manufacturing Practices (GMP)

## LABORATORY



Our laboratory is fully equipped with a R&D Laboratory to perform stability and compatibility testing with equipment including ovens, scales, pH meters, viscometers, density meters and Gas Chromatography coupled with Mass Spectrometry (GC/MS)

## QUALITY CONTROL



Physical-chemical and microbiological laboratory: Analysis of raw materials and implementation of all the controls required to ensure the quality of our products.





## WHITE & MACERATION ROOMS

Automatic dosing of raw materials and controlled temperature.



## SEMI-AUTOMATIC FILLING LINES

Filling machines for small to medium scale production requirements.



## AUTOMATIC FILLING LINES

Automatic perfume crimping and filling production line.

ALL YOU NEED  
IS AN IDEA, WE'LL  
DO THE REST

---

PRIVATE LABEL PERFUMES

